

PLANS AND PROGRESS REPORT ON SOUTH COAST FIELD STATION

Martin R. Huberty

Professor of Irrigation and Engineering, University of California, Los Angeles,

Good progress has been made at the Station during the past year. The larger unit of land, lying to the southeast of Lambert Road, has been leveled. The entire tract was planted to barley. This planting, besides having provided protection against erosion, has served as a good indicator of soil conditions.

An asphalt lined reservoir, with a capacity of eight acre feet, has been constructed. The main pumping plant, which will deliver water to the reservoir from the Irvine Ranch conduit, and the two booster pumps, which will provide pressure for sprinkler irrigation, have been installed and tested.

A high pressure irrigation system has been installed which will serve not only the tract that has been leveled, but also includes a stub line to the northwest tract. This extension will permit the irrigation of this area through the use of portable irrigation pipes.

The reservoir will not be filled prior to the time it is enclosed within a high fence, for which a contract has already been signed. As an unprotected pond in an area where there are children might be classed as an attractive nuisance, we do not choose to create this hazard. Although installation of the low pressure pipe system has been postponed, there seems to be no question but that we will be able to deliver water to any part of the leveled tract by the middle of July, at which time the first avocado plantings will be made.

As yet, no buildings have been constructed, but they are being planned for the immediate future. A lath house is needed for the propagation of citrus trees. Lack of this facility will not restrict the growing of avocado trees for the Station plantings, however, since permission has been granted the interested parties to develop the trees in sterilized soil away from the station. Land will be allocated for the study of the following problems, which will be of particular interest to avocado growers: breeding, irrigation, virus, rootstock, variety, and pest.



Fig. 1. Beginning construction of the reservoir.

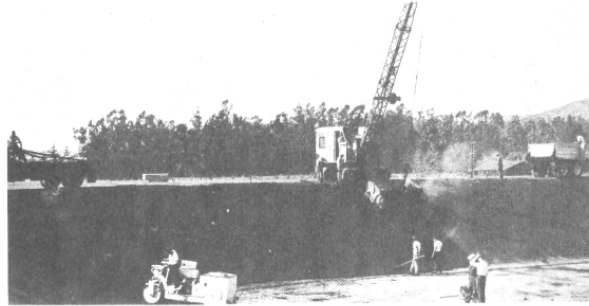


Fig. 3. Lining the reservoir.

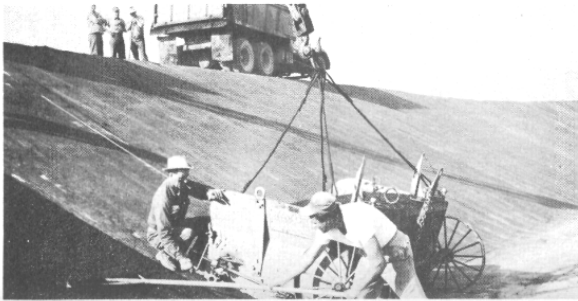


Fig. 2. Placing asphalt on the sides of the reservoir.

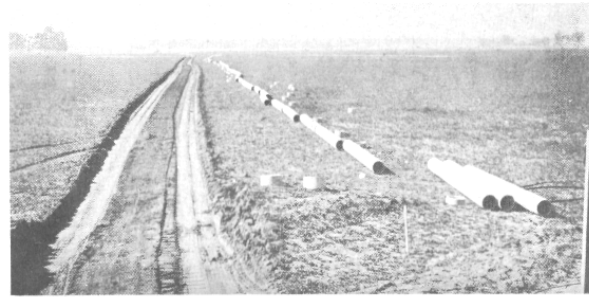


Fig. 4. First step in the installation of the main pipe line.