

## 'Eden'—A New Avocado Cultivar

U. Lavi, D. Sharon, D. Kaufman, D. Saada, A. Chapnik, D. Zamet, C. Degani, and E. Lahav

Agricultural Research Organization, P.O. Box 6, Bet Dagan 50250, Israel

S. Gazit

Faculty of Agriculture, the Hebrew University of Jerusalem, P.O. Box 12, Rehovot 76100, Israel

The avocado (*Persea americana* Mill.) breeding project in Israel is located at the Volcani Center in Bet Dagan and at the Akko Experimental Station. So far three cultivars from the project have been released: 'Iriet', 'Adi', and 'Gil' (Lahav et al, 1989, 1992, 1995). In Bet Dagan, ≈6500 seedlings were screened in the last 10 years. During each harvest season, fruit are picked once a month from each seedling, and 22 traits are evaluated. The performance of each seedling is scored in a Microsoft Excel file and summarized at the end of the season. These data are used for selection of new avocado cultivars as well as studying the genetics of avocado (Lavi et al, 1993).

Table 1. Performance of 'Eden' and 'Hass' in 16 traits.

| Trait                    | Cultivars        |                   |
|--------------------------|------------------|-------------------|
|                          | Hass             | Eden              |
| Average fruit weight (g) | 210              | 280               |
| Skin color               | Black            | Dark green        |
| Gloss                    | Slight           | High              |
| Surface <sup>z</sup>     | Slightly pimpled | Slightly rough    |
| Thickness                | Medium           | Medium            |
| Texture                  | Leathery         | Leathery to stony |
| Seed size <sup>y</sup>   | 13% to 17%       | 10% to 15%        |
| Ease of peeling          | Good             | Good              |
| Flesh color              | Yellow-green     | Yellow            |
| Fibers                   | Slight           | Slight            |
| Bitterness               | None             | None              |
| Sweetness                | None             | None              |
| Aroma                    | Medium           | Medium            |
| Flavor                   | Very good        | Good              |
| Softening time           | 10–15 days       | 10–15 days        |
| Harvest duration         | November–May     | November–April    |

<sup>z</sup>Skin surface: pimpled = the skin has small protrusions on the surface, rough = the skin has grainy surface.

<sup>y</sup>Seed size is measured as percent of fruit weight.

### Origin

'Eden' (BD-40/100) was selected at the Volcani Center. The seedling resulted from a 'Pinkerton' tree that was caged with 'N-151- 2' in 1986. The seedling was planted in 1988 and bore its first fruit in 1991. Analysis of minisatellite (Lavi et al., 1991) and

Simple Sequence Repeats (Lavi et al, 1994) DNA markers, verified it as a hybrid of the two caged cultivars.

### **Description**

'Eden' is described according to IBPGR descriptors for avocado (1992). The tree canopy is medium to small (slightly smaller than 'Hass') and the tree shape is columnar. Leaves are intermediate oblong-lanceolate and dark green. No anise scent is noticeable in the leaves. Flowering is profuse in April and the flower type is A.

'Eden' fruit is ovate shaped (Fig. 1) and fairly uniform in shape and size. Fruit weight is 250-400 g, averaging =280 g, =30% heavier than 'Hass' (Table 1). The skin is brilliant dark green with medium thickness (Guatemalan type with stone cells). The peel separates easily from the flesh in ripe fruit. The seed is round, small to medium in size (=10% to 15% of the fruit weight), and separates cleanly from the flesh. The flesh is yellow, buttery in texture, and largely free of fibers. A panel of experts carrying out comparative tests judge the flavor to be good and nut-like. The harvest season starts in November and fruit can be kept on the tree until April (similar to 'Hass').

Fruit may be stored for at least 24 days at 5 °C and 95% relative humidity. Softening at room temperature (20 °C) takes 10 to 15 days.

Preliminary results show that 'Eden' starts to bear fruit 2 to 3 years after grafting, and its productivity seems to be very good. The tree may require pruning to control a tendency to biennial bearing.

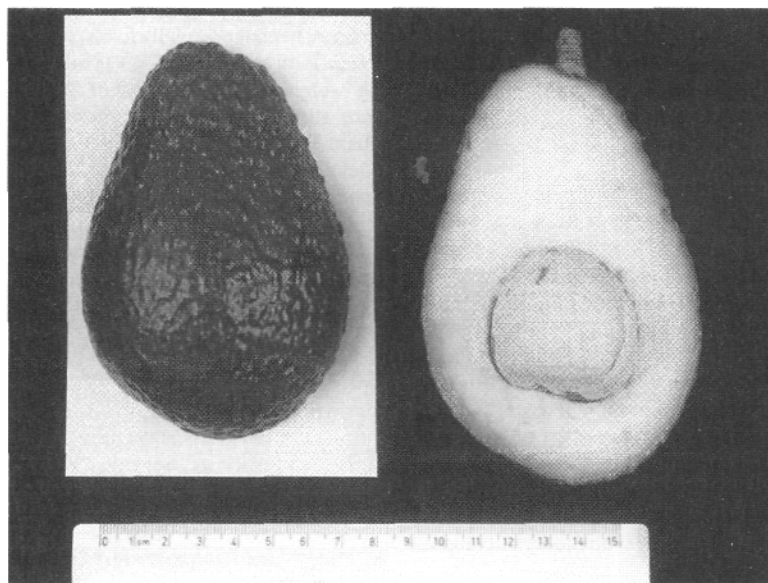


Fig. 1. Fruit of 'Eden' avocado (scale in mm).

### **Availability**

'Eden' is being patented, and can be obtained from the Agricultural Research Organization, the Volcani Center, Bet Dagan, Israel.

### **Literature Cited**

IBPGR. 1992. Descriptors for avocado. Intl. Board for Plant Genetic Resources, Rome.

- Lahav, E., U. Lavi, D. Zamet, C. Degani, and S. Gazit. 1989. 'Iriet'—A new avocado cultivar. *HortScience* 24:865- 868.
- Lahav, E., U. Lavi, D. Zamet, C. Degani, and S. Gazit. 1992. 'Adi'—A new avocado cultivar. *HortScience* 27:1237.
- Lahav, E., U. Lavi, D. Zamet, C. Degani, and S. Gazit. 1995. 'Gil'—A new avocado cultivar. *HortScience* 30:158.
- Lavi, U., M. Akkaya, A. Bhagwat, E. Lahav, and P. Cregan. 1994. Methodology of generation and characteristics of simple sequence repeat DNA markers in avocado (*Persea americana* Mill.). *Euphytica* 80:171-177.
- Lavi, U., J. Hillel, A. Vainstein, E. Lahav, and D. Sharon. 1991. Application of DNA fingerprints for identification and genetic analyses of avocado. *J. Amer. Soc. Hort. Sci.* 116:1078-1081.
- Lavi, U., E. Lahav, C. Degani, S. Gazit, and J. Hillel. 1993. Genetic variance components and heritabilities of several avocado traits. I. *Amer. Soc. Hort. Sci.* 118:400- 404.